



AFINOX AUTOMATRIX

"Precision in Automation, Excellence in Supply"

Precision in Automation Excellence in Supply

AFINOX AUTOMATRIX PVT LTD CO., a global leader in the supply of industrial spare parts. We specialize in sourcing and delivering high-quality, reliable, and cost-effective solutions for a wide range of industries worldwide. performance and reliability.

Our Brands



Address
Chennai, Tamilnadu

Get in touch with our team
to discuss your products
needs



For More Information
www.afnautomatrix.com



ELECTRICALS PRODUCTS



**E2 Moulded Mining
Circuit Breaker**



**DM1 Frequency
Drive**



EV Traction Inverter



Distribution Boards



Enclosures



DC-Energy-Meter



**DC1 Frequency
Drive**



Contactors



DC Conatctors



**Contactors Power
Interface**



**Caprilok-Black-
Conduit**



**Circuit Breaker Load
Center**



Cables



Busbars



**Accuprox Inductive
Proximity Sensors**



**Asset Manager for
Transformer**

ELECTRICALS PRODUCTS



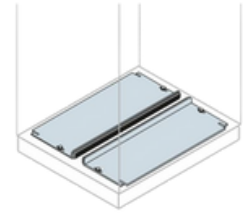
Motor Starter



**Mobile-Capacitor-
Bank**



**Inductive-Proximity-
Sensors**



**Main Distribution
Board**



MCCB



**Low Voltage
Frequency Drive**



LED- Light Fixtures



Lamp Circuit Breaker



IHB- Light Fixtures



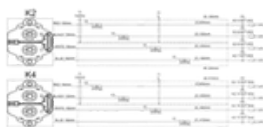
**Hot Swap
Connectors**



**Internally Fused
Capacitors**



Harsh Duty Sensors



G2 Conactors



Fuses



Fuses for Battery



Explosion Proof Motors

ELECTRICALS PRODUCTS



Pool Insulator



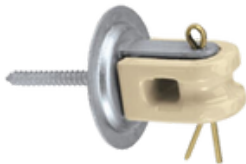
Split Core Current Transformer



Shore Power Connectors



Service Entrance Surge Protectors



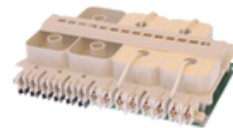
Fuses



Transformers



Screw Type Insulator



Relays-SWG-CB



Relays



Power Supplies



Redundancy Unit for Power Supply



Photo Electric Sensors



Post Insulator

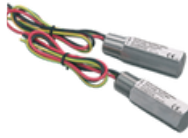


PFC Capacitor



Mtrix Invertors

ELECTRICALS PRODUCTS



Wires



Voltage Tranformers



voltage Test Station



USB- Hotswap connectors



Unfused-Capacitors



Transformers



**Transformer Condition
Monitoring**



Timer Module



Terminal Blocks



Telecom-Inverter



Switchgear



Switchgear Cabinet



Switch



**Surge Protector for Data
& Signal Applications**



Surge Protector



Starter

ELECTRICALS PRODUCTS



A1 Motor Unit



ACB Switch



**Accessory for
Variable Frequency
Drives**



**AC Contactor
Separator**



Connectors



Transformers



**Conduit Sealing
Device**



Conduit Fittings

BRANDS



ELECTRONICS PRODUCTS



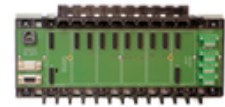
Advanced Diagnostics



**5500 Controller
Temperature
Controller**



Distance Sensors



Backplane LB9023



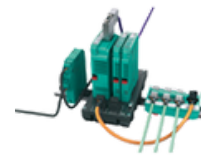
Accessories



**Absolute Rotary
Encoders**



Basic Power Supplies



Commissioning Tool



**Communication
Module**



**Continuous
Measurement**



Control Module



Control Units EX E



**Displays & Signal
Processing**



Engineered HMI



Ethernet Switches



**Explosion Protection
Enclosures**

ELECTRONICS PRODUCTS



Float switch



**Functional Safety
Process Automation
Application**



GXP HMI



**High Temperature
Identification
System**



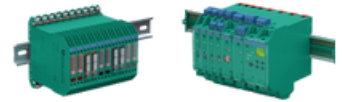
**Industrial
Communication**



Interface Module



Load cells



**Intrinsically Safe
Barriers Module**



**Magnetic Immersion
Probe**



Magnetic Encoder



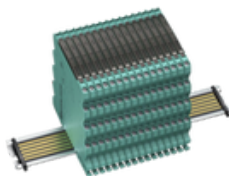
**Measurement
Product**



Modular HMI



Module



Modules



**Multiple Beam Light
Barriers**



**Object presence
Detection**

ELECTRONICS PRODUCTS



PCI Card PLC



Photoelectric Sensor



Power Extenders & Repeater Power



Power Supplies



Power Supply



Power Supplies



Problem Solver ML 100 Series Sensor



Process Displays



Profinet Gateway with PLC



PS PowerSupplies



Radar Sensors with CAN interface



Relay Module



Relay Output Module



Rotary Encoders



Safety Beauty Shot Computer Automation



Safety Relais Controller

ELECTRONICS PRODUCTS



**Safety Switches
& Enabling
switches**



Signal Converters



**Smart Runner 3D
sensor**



Switch Amplifiers



**Switch
Disconnectors**



Switches



Trip Amplifiers



Ultrasonic Sensor



**Universal Input
Output**



**Vibration Limit
Switch**

BRANDS



MECHANICAL PRODUCTS



Axial Clamp Seal



Bearing 2



Bearing



Bearing 3



Belt Pulley



Belt Sleeve



Bolt and Nut



Bolt and Nut



Cam Rollers



Cam Roller



Sasatte Seals



Chain 2



Chain Lubrication



Chain



Classical Timing Belt



**clutch release
bearing seal**

MECHANICAL PRODUCTS



Combi Kits



Controller



**Coupling Horizontal
Split Cover**



Switches



**Crane Rail
Lubricator**



**Cylindrical Needle
Roller**



**DDS Differential
pressure switch**



**EFFP Grease filling
pump**



**Electrically
Operated
Lubrication Pump**



**Electrically
Operated Pump**



Gear Coupling Cover



**Gear Coupling
Assembly Kit**



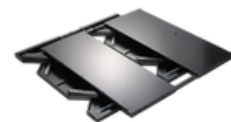
Hydraulic Pump



**Hydraulic Rings &
Propellernuts**



Idler Sprocket



Isolation Table

MECHANICAL PRODUCTS



Keyless Bushing



Keyway



**Lubrication Pump
p205**



**Lubrication Pump
P212**



Magnetic Encoders



Metal Face Seal



Non Split Housing



Non Split Housings



Pressure Switch DSB



PTFE Seals



Pulleys



Vings with Flanges



Rings with Roller



SH Bushing



Shaft Alingment Tool



Shafts

MECHANICAL PRODUCTS



Speedi Sleeve



Support Roller



**Standard Jaw
Pullers**



**Tapered Coupling
Grid**



**Tapered Grid
Coupling Hub**



Thin Roller Washer



Turbain Shaft



Valve Stem Seals



PC Pump



OS Metering Device

BRANDS

ABB

Honeywell

EATON

**MITSUBISHI
ELECTRIC**
Changes for the Better

SKF **rexroth**

HYDRAULICS PRODUCTS



Anti Reaction Valve



**Bar Manifolds &
Motor Pump**



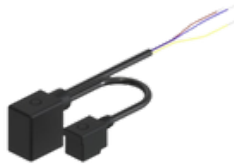
Braided Fittings



Braided Hose



Check Valve



Cable Power Cable



**Compensated
Proportional Valves**



**Climate Solution for
Cooling**



**Condensing
Pressure Regulator**



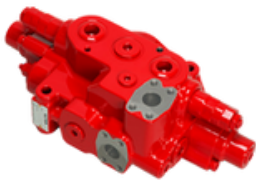
**Configurable
Solenoid Operated
Modular Valves**



**Control Shut Off &
Relief Valves**



**Cylinder Control
Manifold**



Cylinders



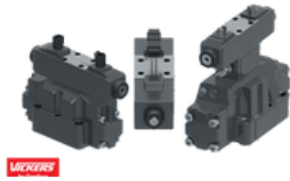
Diesel Power Pack



**Differential Pressure
Controllers & Flow
Controllers**



**Differential pressure
controllers flow
controllers limiters 2**



MEKERS

**Directional Control
on off Valves**



**Directional Valve
Group 2**



**Directional Valve
Group**



Dynomax Hose



**Electric Hydraulic
Worholic Pump**



Electric Power Pack



**Electrical Pressure
Switch, Manifold
Mount**



**Electrical Pressure
Switch**



**Electron. Control
Accessories**



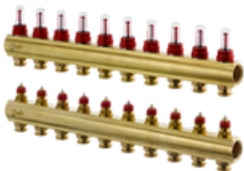
Energy Meters



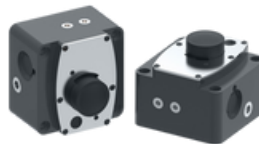
Face Seal



**FHF EM Automatic
Air Vent**



**FHF F10 Group Brass
Manifold Set**



Flow Control Valves



Gauge Adaptor



Gauge Valve



Gear Motors



Hexagon Hydraulic Manifold



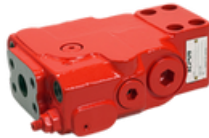
High Pressure Fitting 2



High Pressure Fitting



High Voltage Multipurpose Motor



Holding Valve



Hybrid Coupler



Hydraulic Pump



Hydraulic Cylinder



Hydraulic Force and Pressure Gauges



Hydraulic Lift Valve



Hydraulic Manifold 4 Outlet



Hydraulic Manifold with Gauges and Frame



Hydraulic Manifold



Hydraulic Pressure Gauge



Hydrokraft MFXS Motor

HYDRAULICS PRODUCTS



**ICS Cartridges
Group 03
Directional Control
Valves**



**Industrial Vane
Motors**



**Industrial Solenoid
valves Danfoss**



**Intensifier Face
Mount Manifold**



**Intensifier, Inline,
Dump Valve**



**Line Control Shut
Off and Relief Valves**



Manifold Set



**Low Speed High
Torque Motor Group
1**



**Mechanical Pressure
Switch**



**Micron Nominal
Filtration**



Motor



**Mobile Piston
Motors**



**Mounted Directional
Control Valve,**



**Pilot Valves for ICS
Flexline**



Power Pack Valve

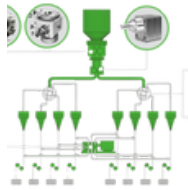


Power Pack Valves

HYDRAULICS PRODUCTS



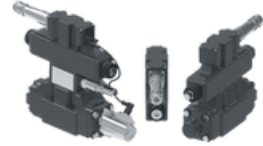
**Pressure Reducing
Valve for VP-Series
Valves**



precision Gear Pump



Pressure Switch



**Proportional
Directional Valves**



**proportional Relief
Valve**



**Proportional Valve
Electronics**



**PVG 32 Proportional
Valves**



**Quick Disconnect
Coupler and
Adaptor Kit**



**Quick Disconnect
Coupler Female Half**



**Quick Disconnect
Coupler**



**Remote Mounted
Directional Control
Valve**



Return Line Filter



Screw Pump



Servo Valves



Spiral Hoses



Stainer



Ultra-High Pressure Fitting, Coupling



Ultra-High Pressure Fitting, Cross



Ultra-High Pressure Fitting



Ultra-High Pressure Fitting Elbow



V72 Pilot Operated Check Valve



V17 Check Valve



Valve



Valve Vision Seals



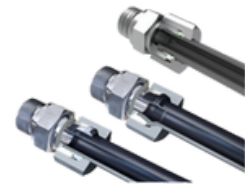
Valves



VD1P Inline Check Valve



VD2P Dual Pilot Operated Check Valve



Waltech 3 Fittings



Strainers for District Heating and District Cooling



Strainers for Heating and Cooling

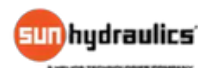


Tank Accumalotor



Thermo-plastic Duplex Torque

BRANDS



PROCESS CONTROLS & INSTRUMENTATION PRODUCTS



Effector RV 3110



**Capacitive
Sensors**



**Pressure meter
sensors**



Inductive sensors



**Temperature
Sensor**



**Flush Pressure
Sensor**



**Photoelectric
Sensor**



**Diffuse Reflection
Sensor**



**Intelligent Incremental
Encoders**



**Inductive Ring
Sensors**

BRANDS

ABB


Endress+Hauser

Honeywell


EMERSON

KROHNE